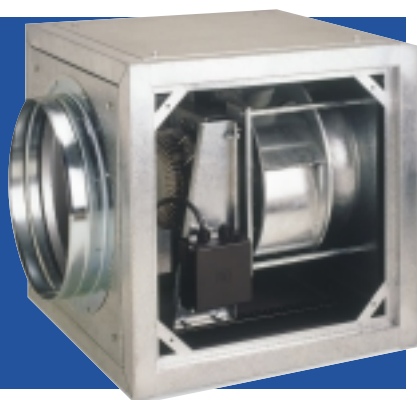


CAJAS DE VENTILACIÓN CON MOTOR INCORPORADO Serie UPM



DESCRIPCIÓN

Gama de cajas con motor incorporado y rodete de álabes hacia atrás, que consta de 17 modelos y cubren un margen de caudales desde 700 a 17.500 m³/h.

APLICACIONES

Ventilación general de locales como:

- Comercios.
- Oficinas.
- Restaurantes.
- Cocinas industriales.

CONSTRUCCIÓN

Cajas

Fabricadas en chapa galvanizada. Ejecución con doble pared con aislamiento interior. Bridas circulares de diámetro normalizado a la aspiración y descarga.

Ventilador

Ventilador centrífugo con rodete de álabes hacia atrás, fabricados en chapa de acero galvanizada. Motor directamente acoplado.

Motor

Monofásicos:

Motor de tipo asíncrono con rotor de jaula de ardilla en aluminio inyectado (según Norma UNE-20113 y CEI 34-1).

- Monofásicos 230 V 50 Hz.

- IP 55.

- Clase F.

- Rodamientos de engrase permanente.

- Protección térmica accesible en caja de bornes.

- Regulable en tensión.

CARACTERÍSTICAS TÉCNICAS

Tipo	Velocidad (r.p.m.)	Potencia abs. máxima (W)	Intensidad absorbida máxima (A)		Caudal máximo (m ³ /h)	Nivel de presión sonora (dB (A) a 1,5 m)			Peso (kg)	
			a 230 V	400 V		Descarga	Aspiración	Radiado		
MONOFÁSICO										
UPM/4-700/200	1375	62	0,30	-	690	46,0	44,0		26	
UPM/4-1200/250	1340	115	0,57	-	1150	51,0	47,5		30	
UPM/4-1500/250	1380	160	0,72	-	1520	54,0	51,5		38	
UPM/4-2600/355	1350	275	1,20	-	2600	60,0	55,0		46	
UPM/4-3800/355	1380	570	2,60	-	3750	63,0	60,0		62	
UPM/4-5600/400	1380	1100	5,30	-	5600	70,0	65,5		94	
TRIFÁSICO										
UPM/4-700/200	1375	62	0,30	-	690	46,0	44,0		26	
UPM/4-1200/250	1340	115	0,57	-	1150	51,0	47,5		30	
UPM/4-1500/250	1380	160	0,72	-	1520	54,0	51,5		38	
UPM/4-2600/355	1350	275	1,20	-	2600	60,0	55,0		46	
UPM/4-3800/355	1380	570	2,60	-	3750	63,0	60,0		62	
UPM/4-5600/400	1380	1100	5,30	-	5600	70,0	65,5		94	
UPM/4-560	1475	2050		4,00	8800	71,0	76,0	54,0	105	
UPM/6-560	960	900		2,90	5700	61,0	65,0	44,0	105	
UPM/6-630	975	1500		3,50	10000	64,0	69,0	48,0	120	
UPM/6-710	965	2500		5,10	14000	68,0	73,0	50,0	160	
UPM/6-800	965	3900		7,10	17100	71,0	76,0	52,0	220	

CARACTERÍSTICAS ACÚSTICAS

Espectro de presión sonora dB(A) por banda de frecuencia (Hz):

Tipo		63	125	250	500	1000	2000	4000	8000
UPM/4-700/200	Asp.	21,5	30,5	36,5	41,5	40,0	37,0	34,0	28,0
	Des.	24,5	33,0	37,0	38,0	38,0	38,0	34,5	27,5
	Rad.	0,0	0,0	0,0	0,0	0,0	0,0	0,0	0,0
UPM/4-1200/250	Asp.	23,0	34,5	39,0	45,5	44,0	41,5	45,5	33,0
	Des.	27,5	38,5	38,5	40,5	41,5	39,0	38,0	30,0
	Rad.	0,0	0,0	0,0	0,0	0,0	0,0	0,0	0,0
UPM/4-1500/250	Asp.	30,0	39,5	47,5	51,0	45,0	41,0	39,0	37,5
	Des.	38,0	45,0	43,5	45,5	45,0	41,0	35,0	30,0
	Rad.	0,0	0,0	0,0	0,0	0,0	0,0	0,0	0,0
UPM/4-2600/355	Asp.	26,5	44,0	54,0	56,0	48,0	48,5	51,0	48,5
	Des.	33,5	45,0	50,0	48,0	48,5	45,5	43,0	38,5
	Rad.	0,0	0,0	0,0	0,0	0,0	0,0	0,0	0,0
UPM/4-3800/355	Asp.	39,0	49,5	58,5	58,0	54,0	50,0	44,5	48,5
	Des.	43,0	49,5	54,5	51,0	54,5	50,0	46,0	40,5
	Rad.	0,0	0,0	0,0	0,0	0,0	0,0	0,0	0,0
UPM/4-5600/400	Asp.	44,5	49,5	58,5	60,0	67,0	61,5	60,5	56,5
	Des.	49,5	50,5	56,5	58,5	62,5	55,5	51,5	46,0
	Rad.	0,0	0,0	0,0	0,0	0,0	0,0	0,0	0,0

Tipo		63	125	250	500	1000	2000	4000	8000
UPM/4-560	Asp.	61,0	73,0	78,0	80,0	79,0	75,0	74,0	71,0
	Des.	62,0	75,0	81,0	85,0	85,0	82,0	76,0	67,0
	Rad.	52,0	65,0	62,0	60,0	55,0	49,0	40,0	33,0
UPM/6-560	Asp.	54,0	64,0	68,0	69,0	67,0	66,0	65,0	63,0
	Des.	56,0	66,0	71,0	75,0	74,0	71,0	64,0	54,0
	Rad.	46,0	56,0	52,0	50,0	44,0	38,0	28,0	20,0
UPM/6-630	Asp.	57,0	65,0	72,0	73,0	71,0	69,0	68,0	66,0
	Des.	60,0	70,0	75,0	78,0	78,0	75,0	67,0	58,0
	Rad.	50,0	60,0	56,0	53,0	48,0	42,0	31,0	24,0
UPM/6-710	Asp.	61,0	71,0	75,0	77,0	75,0	73,0	72,0	70,0
	Des.	63,0	74,0	79,0	82,0	82,0	78,0	71,0	61,0
	Rad.	51,0	62,0	58,0	55,0	50,0	43,0	33,0	25,0
UPM/6-800	Asp.	65,0	75,0	79,0	80,0	78,0	77,0	76,0	74,0
	Des.	67,0	77,0	82,0	86,0	85,5	82,0	74,0	65,5
	Rad.	54,0	64,0	60,0	58,0	52,0	46,0	36,0	29,0

UPM

DIRECT-DRIVE CENTRIFUGAL CABINET FAN UPM Series

DESCRIPTION

The UPM range of direct-drive, backward curved centrifugal cabinet fans consists of 11 nominal model sizes covering a total of 17 model variations. Airflow performances range from 700 up to 17,500 m³/hr.

APPLICATIONS

The UPM series of fans are suitable for many ducted ventilation system applications, including the ventilation of:

- Factories. - Offices.
- Restaurants. - Commercial kitchens.

CONSTRUCTION CHARACTERISTICS

Casing

All UPM models are manufactured using a robust galvanised sheet steel profile and panel construction. All side panels consist of a double wall sheet steel construction with interior acoustic insulation. All models are supplied with circular inlet and discharge ducting connection flanges suitable for direct connection to industry standard diameter ducting sizes.

Impeller

All UPMD models incorporate backward curved centrifugal impellers manufactured in high grade sheet steel. The impellers are directly coupled to the motor and dynamically balanced.

Motor

All models incorporate asynchronous induction motors with a squirrel cage rotor in die cast aluminium. All motors are manufactured in accordance with UNE-20113 and CEI-34-1 standards. The following standard specifications apply:

Single Phase, 230V 50Hz

Three Phase 230/400V 50Hz

IP55, Class F Insulation

Sealed for life ball bearing assemblies.

All models include a Safety Thermal Overload Protection, accessible for connection in the wiring terminal box.

All models are suitable for speed control via voltage regulation.

TECHNICAL CHARACTERISTICS

Model Type	Speed (RPM)	Max. Absorbed Power (kW)	Max. Absorbed Current (A)		Max. Airflow (m ³ /h)	Sound Pressure Level (dB (A) at 1,5 m)			Weight (kg)	
			230 V	400 V		Outlet	Inlet	Radiated		
SINGLE PHASE										
UPM/4-700/200	1375	62	0,30	–	690	46,0	44,0		26	
UPM/4-1200/250	1340	115	0,57	–	1150	51,0	47,5		30	
UPM/4-1500/250	1380	160	0,72	–	1520	54,0	51,5		38	
UPM/4-2600/355	1350	275	1,20	–	2600	60,0	55,0		46	
UPM/4-3800/355	1380	570	2,60	–	3750	63,0	60,0		62	
UPM/4-5600/400	1380	1100	5,30	–	5600	70,0	65,5		94	
THREE PHASE										
UPM/4-700/200	1375	62	0,30	–	690	46,0	44,0		26	
UPM/4-1200/250	1340	115	0,57	–	1150	51,0	47,5		30	
UPM/4-1500/250	1380	160	0,72	–	1520	54,0	51,5		38	
UPM/4-2600/355	1350	275	1,20	–	2600	60,0	55,0		46	
UPM/4-3800/355	1380	570	2,60	–	3750	63,0	60,0		62	
UPM/4-5600/400	1380	1100	5,30	–	5600	70,0	65,5		94	
UPM/4-560	1475	2050		4,00	8800	71,0	76,0	54,0	105	
UPM/6-560	960	900		2,90	5700	61,0	65,0	44,0	105	
UPM/6-630	975	1500		3,50	10000	64,0	69,0	48,0	120	
UPM/6-710	965	2500		5,10	14000	68,0	73,0	50,0	160	
UPM/6-800	965	3900		7,10	17100	71,0	76,0	52,0	220	

ACOUSTIC CHARACTERISTICS

Sound pressure level spectrum dB(A) at third octave band average frequencies,

Model Type		63	125	250	500	1000	2000	4000	8000	Model Type		63	125	250	500	1000	2000	4000	8000
UPM/4-700/200	Inlet	21,5	30,5	36,5	41,5	40,0	37,0	34,0	28,0	UPM/4-560	Inlet	61,0	73,0	78,0	80,0	79,0	75,0	74,0	71,0
	Outlet	24,5	33,0	37,0	38,0	38,0	38,0	34,5	27,5		Outlet	62,0	75,0	81,0	85,0	85,0	82,0	76,0	67,0
	Rad.	0,0	0,0	0,0	0,0	0,0	0,0	0,0	0,0		Rad.	52,0	65,0	62,0	60,0	55,0	49,0	40,0	33,0
UPM/4-1200/250	Inlet	23,0	34,5	39,0	45,5	44,0	41,5	45,5	33,0	UPM/6-560	Inlet	54,0	64,0	68,0	69,0	67,0	66,0	65,0	63,0
	Outlet	27,5	38,5	38,5	40,5	41,5	39,0	38,0	30,0		Outlet	56,0	66,0	71,0	75,0	74,0	71,0	64,0	54,0
	Rad.	0,0	0,0	0,0	0,0	0,0	0,0	0,0	0,0		Rad.	46,0	56,0	52,0	50,0	44,0	38,0	28,0	20,0
UPM/4-1500/250	Inlet	30,0	39,5	47,5	51,0	45,0	41,0	39,0	37,5	UPM/6-630	Inlet	57,0	65,0	72,0	73,0	71,0	69,0	68,0	66,0
	Outlet	38,0	45,0	43,5	45,5	45,0	41,0	35,0	30,0		Outlet	60,0	70,0	75,0	78,0	78,0	75,0	67,0	58,0
	Rad.	0,0	0,0	0,0	0,0	0,0	0,0	0,0	0,0		Rad.	50,0	60,0	56,0	53,0	48,0	42,0	31,0	24,0
UPM/4-2600/355	Inlet	26,5	44,0	54,0	56,0	48,0	48,5	51,0	48,5	UPM/6-710	Inlet	61,0	71,0	75,0	77,0	75,0	73,0	72,0	70,0
	Outlet	33,5	45,0	50,0	48,0	48,5	45,5	43,0	38,5		Outlet	63,0	74,0	79,0	82,0	82,0	78,0	71,0	61,0
	Rad.	0,0	0,0	0,0	0,0	0,0	0,0	0,0	0,0		Rad.	51,0	62,0	58,0	55,0	50,0	43,0	33,0	25,0
UPM/4-3800/355	Inlet	39,0	49,5	58,5	58,0	54,0	50,0	44,5	48,5	UPM/6-800	Inlet	65,0	75,0	79,0	80,0	78,0	77,0	76,0	74,0
	Outlet	43,0	49,5	54,5	51,0	54,5	50,0	46,0	40,5		Outlet	67,0	77,0	82,0	86,0	85,5	82,0	74,0	65,5
	Rad.	0,0	0,0	0,0	0,0	0,0	0,0	0,0	0,0		Rad.	54,0	64,0	60,0	58,0	52,0	46,0	36,0	29,0
UPM/4-5600/400	Inlet	44,5	49,5	58,5	60,0	67,0	61,5	60,5	56,5										
	Outlet	49,5	50,5	56,5	58,5	62,5	55,5	51,5	46,0										
	Rad.	0,0	0,0	0,0	0,0	0,0	0,0	0,0	0,0										

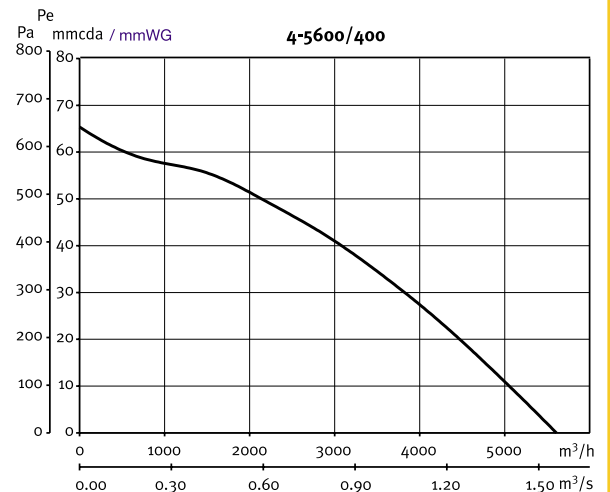
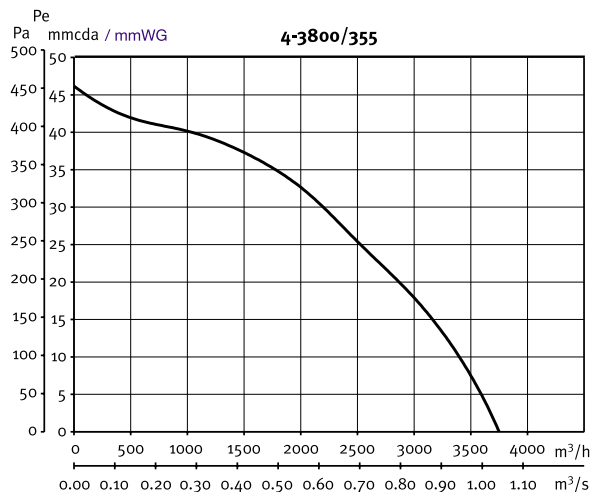
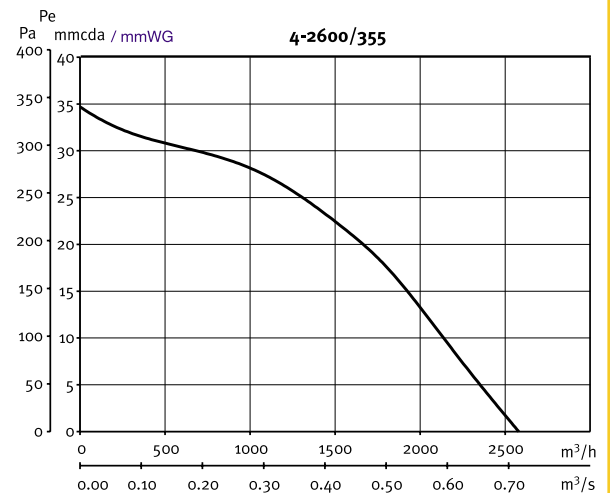
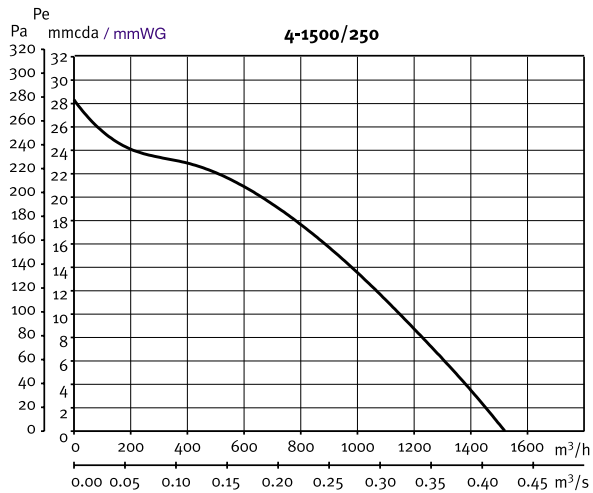
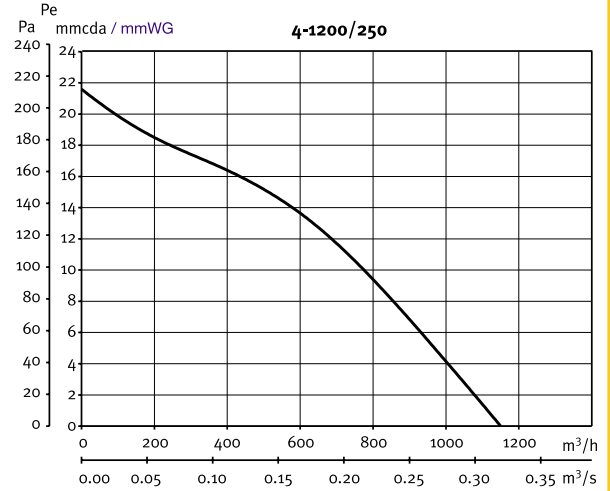
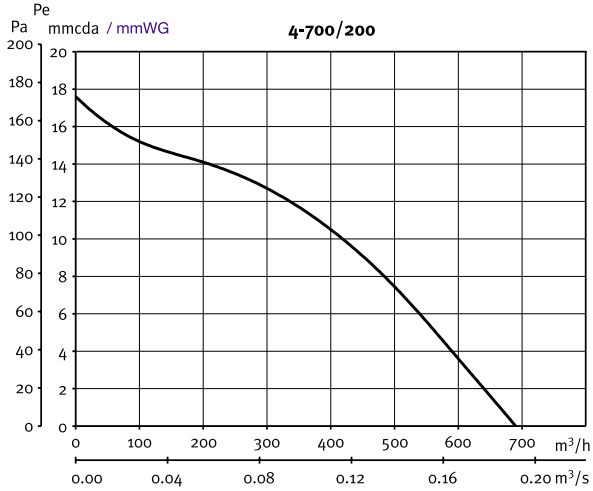


CURVAS CARACTERISTICAS

- Q = Caudal en m³/h y m³/s.
- Pe = Presión estática en mm.c.d.a y Pa.
- Aire seco normal a 20 °C y 760 mm c.d. Hg.
- Ensayos realizados de acuerdo a Normas UNE 100-212-89 BS 848, Part 1; AMCA 210-85 y ASHRAE 51-1985.

PERFORMANCE CHARACTERISTICS

- Q = Air Volume in, m³/hr and m³/s.
- Pe = Static Pressure in Pa. and mmWG.
- Air Density at 20 °C and 760 mmHg.
- Air flow data in accordance with the following standards: BS 848, Part 1&2; UNE 100-212-89, AMCA 210-85 and ASHRAE 51-1985.





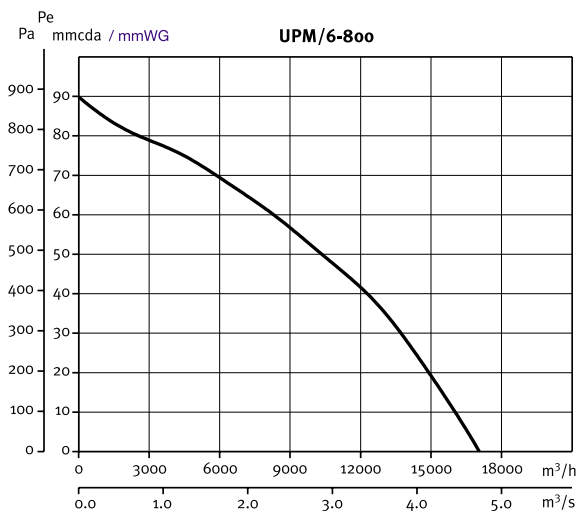
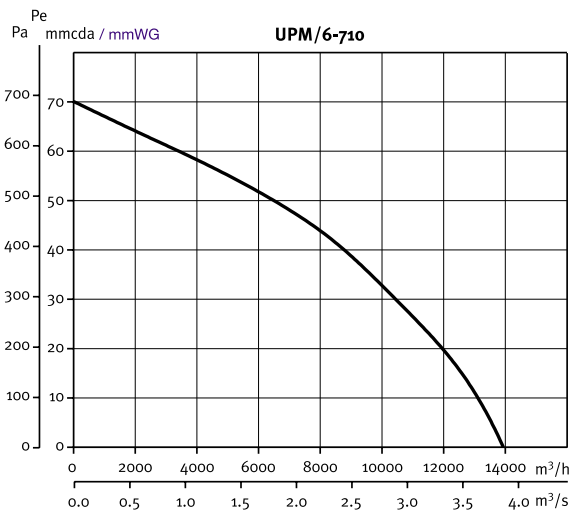
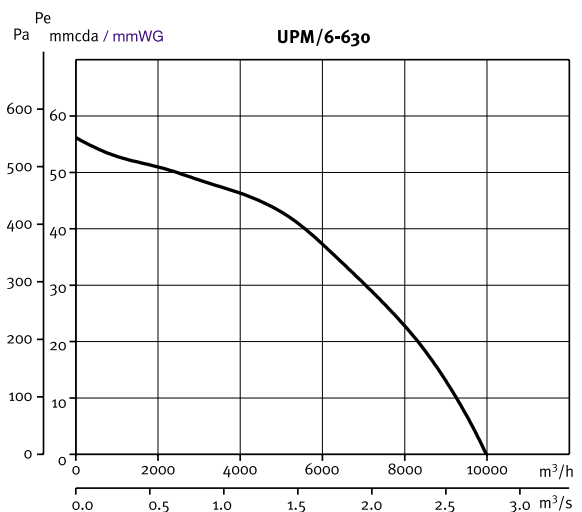
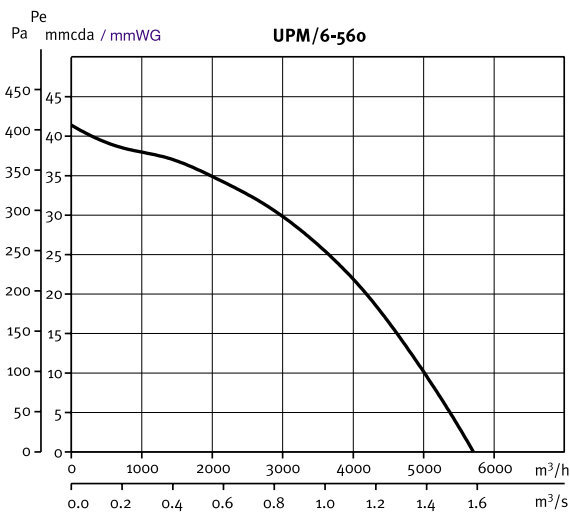
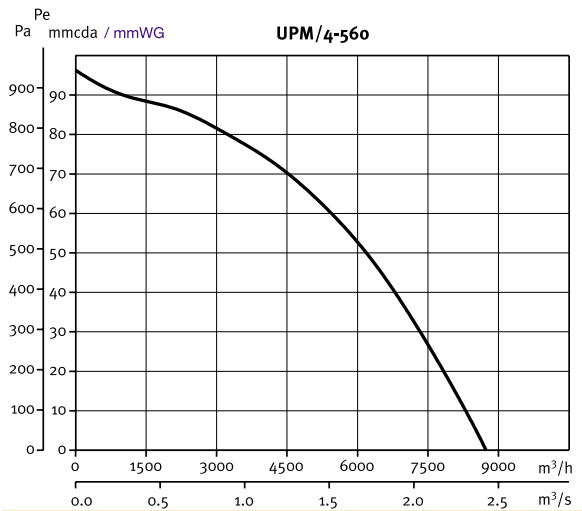
CURVAS CARACTERISTICAS

- Q = Caudal en m³/h y m³/s.
- Pe = Presión estática en mm.c.d.a y Pa.
- Aire seco normal a 20 °C y 760 mm c.d. Hg.
- Ensayos realizados de acuerdo a Normas UNE 100-212-89 BS 848, Part 1; AMCA 210-85 y ASHRAE 51-1985.

PERFORMANCE CHARACTERISTICS

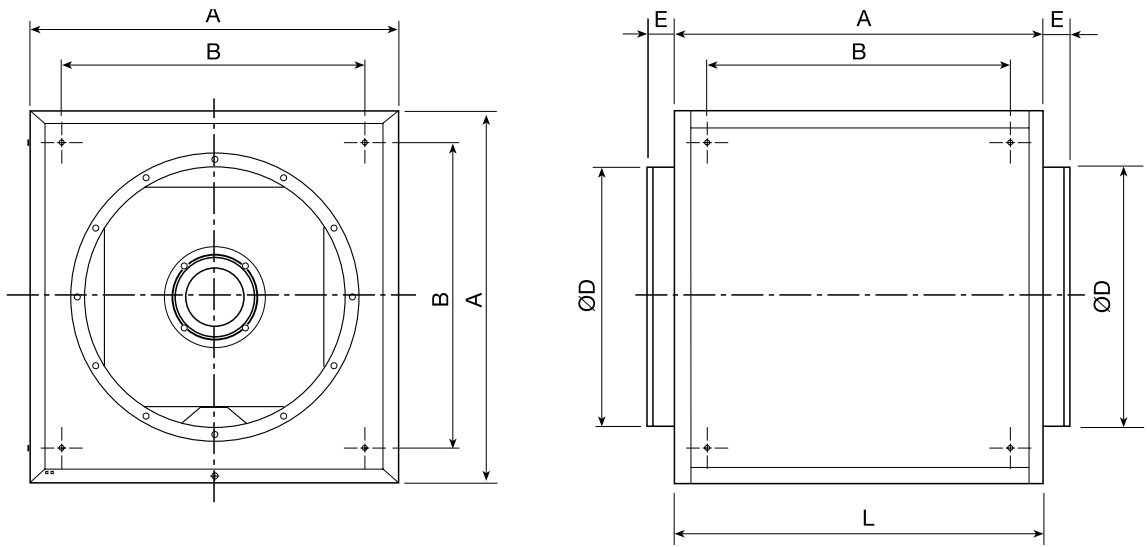
- Q = Air Volume in, m³/hr and m³/s.
- Pe = Static Pressure in Pa. and mmWG.
- Air Density at 20 °C and 760 mmHg.
- Air flow data in accordance with the following standards: BS 848, Part 1&2; UNE 100-212-89, AMCA 210-85 and ASHRAE 51-1985.

UPM

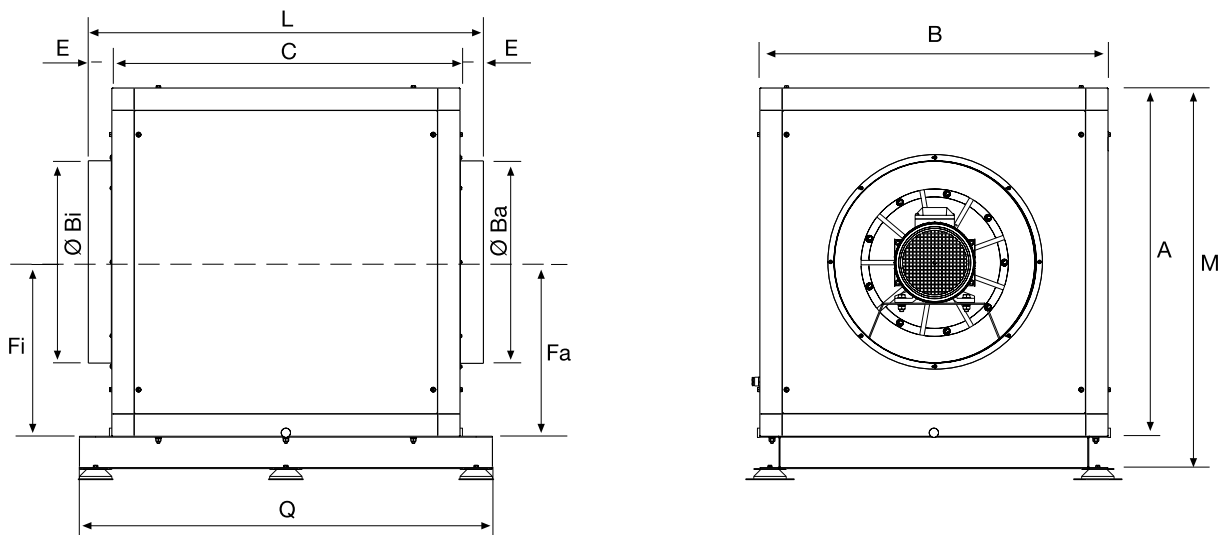




DIMENSIONES (mm) / DIMENSIONS (mm)



Tipo / Model Type	A	B	C	Ø D	E
UPM/4-700/200	400	270	530	200	65
UPM/4-1200/250	450	320	580	250	65
UPM/4-1500/250	500	370	630	250	65
UPM/4-2600/355	550	390	680	355	65
UPM/4-3800/355	650	490	780	355	65
UPM/4-5600/400	800	640	930	400	65



Tipo / Model Type	A	B	C	E	L	M	Q	Ø Bi	Ø Ba	Fi	Fa
560	860	860	860	55	970	940	1020	500	500	430	430
630	920	920	920	55	1030	1000	1080	630	630	460	460
710	980	980	980	55	1090	1060	1140	630	630	490	490
800	1037	1037	1037	55	1147	1117	1197	710	710	518,5	518,5